



## MEET THE TEAM.

Newcastle Powered Industrial Carts are proven to dramatically increase productivity in businesses like yours. Find your solution inside.

# NOW MEET THE FANS.

When your workers are walking, you're losing money. Endless trips to the printer, to enter data, or collect parts add up fast. Our carts provide complete mobile worksites that keep workers on high-value tasks, often doubling their output. Thousands of installations prove that Newcastle customers get more done and save money.

amazon.com



TESLA

Walmart

wayfair

Mercedes-Benz

## TOP 5 REASONS THEY LOVE OUR CARTS:



### 1. FASTER DOCK-TO-STOCK

Reduce cycle times by up to 60%, for more capacity with the same resources. (Cha-ching.)



### 2. TRIMMED PAYROLL

Get higher throughput in fewer hours, and up to 75% less overtime.



### 3. THE END OF MISLABELING

Mislabeling is crazy expensive—and pretty much eliminated when you input, print and apply at the pallet. Easy with a cart.



### 4. UNTETHERED WORKFORCE

Paying workers to wear out their shoes? A cart will have them adding value instead. Watch their satisfaction grow along with their productivity.



### 5. SMALL FOOTPRINT. BIG RETURN.

Carts deliver huge gains without infrastructure or software changes. You won't find a better cost/benefit equation, with predictable 6-month ROI and a lifetime of rewards.

"WE RECEIVE THE SAME AMOUNT OF PRODUCT, BUT WITH FEWER PEOPLE AND LESS OVERTIME. RECEIVING IS THROUGH THE ROOF SINCE THERE IS NO DOWNTIME."

Troy H.  
Tyco International

tyco

# CAPTAINS OF INDUSTRY

Whether efficiently processing a dock full of inbound pallets, speeding pick/pack, or labeling products or outbound parcels, our carts are right at home in industrial settings of all kinds—and built tough for years of service. You'll find no easier way to boost throughput, all without additional infrastructure or software investment.

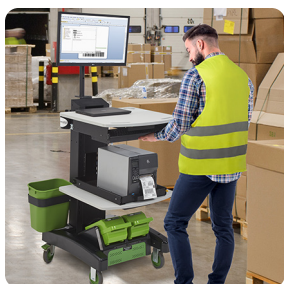
**"FOR PRODUCTIVITY, YOUR CARTS ARE THE BEST THING I HAVE EVER PLACED INTO A WAREHOUSE."**

Joe H.  
Parts Logistics Manager  
Mercedes-Benz



## Warehouse, logistics & distribution

In your fast-moving world, efficiency is the name of the game. Wheel in the carts: Anywhere they're deployed, they instantly become the go-to tool, right beside the forklift and pallet jack. Each cart is a complete productivity center, with everything a worker needs and on-board power. Instead of walking, they'll be working, faster and with far fewer errors. Everybody's happy.



Inbound inspection  
& labeling



60%  
QUICKER DOCK-TO-STOCK



Pick/pack  
& fulfillment



90%  
FEWER LABELING ERRORS

## Manufacturing

If you're looking for savings through process efficiency, you've come to the right place. Our Powered Carts are so effective at eliminating non-productive time—in transport, waiting, and wasted motion—they are an invaluable part of any Lean Manufacturing initiative, and help turn any production floor into a productivity floor.



**"WE DO THE WORK OF THREE WITH ONLY ONE PERSON, DUE TO THE EFFICIENCIES GAINED WITH THIS SYSTEM."**

Jodi P.  
Supervisor Material Control  
Karl Storz



Materials  
replenishment



63%  
MORE RECEIVING VOLUME



5-10  
HOURS/WORKER GAINED



Finished goods  
labeling

**STORZ**

# CART ANATOMY 101

Our carts come in a range of sizes and are field-adjustable for optimal ergonomics. They're easily configured and customizable to accommodate whatever equipment profile you need, no matter your industry. And no one offers more advanced mobile power system options than we do—fixed or swappable, lead or lithium, for full shifts or 24x7 operation.

## Productivity platform

Our carts are the core of the system, providing everything your workers need for maximum productivity, right at their fingertips.

## A place for everything

Typical on-board equipment includes a PC or laptop, printer, and scanners or scales as needed. But modular flexibility and a vast array of options ensures great performance in every application—including yours.

## Never-quit power

Our power systems are among the most advanced and reliable in the industry. So whether you're powering a small laptop for a single shift, or a 24x7 fleet of PCs with all the extras, we've got you covered.

## Happier workers. Yes, we said happier.

A bold claim. But seriously: Customers report employee satisfaction as one of the greatest perks of our carts. It's easy to understand why: workers are more contented when they're productive. And productive workers are what we're all about.





# THE LINEUP

There are no benchwarmers on our team: Every one of our carts offers superior engineering, rugged construction and great value. Ask your salesperson for more help choosing and customizing your model. Onsite installation is also available.



## EC SERIES

Our most economical full-size carts for basic tasks and smaller component profiles.



SIZE/WEIGHT	20 x 21.75 x 43" / 101-140 lbs
AVAILABLE POWER SYSTEMS	PowerSwap Nucleus® MINI Lithium, Fixed Lithium or Sealed Lead Acid
TYPICAL POWERED COMPONENTS	Laptop or tablet, thermal printer and scanner
INCLUDED STANDARD	Top shelf, locking casters, push handles, wastebasket and holder, integrated power system, power strip and cord reel holder

MOST  
POPULAR



## NB SERIES

Our most popular and versatile carts, offering exceptional value and unmatched flexibility.



SIZE/WEIGHT	26 x 24 (or 18) x 42" / 102-270 lbs
AVAILABLE POWER SYSTEMS	PowerSwap Nucleus® Classic Lithium, Fixed Lithium or Sealed Lead Acid
TYPICAL POWERED COMPONENTS	Laptop or tablet, high-volume printer and scanner
INCLUDED STANDARD	Adjustable-height shelf, locking casters, push handles, wastebasket and holder, integrated power system, power strip and cord reel holder



## PC SERIES

Our largest carts with a 400 pound load capacity and plenty of shelf space for inventory and tools.



SIZE/WEIGHT	35.5 (or 53.5) x 26 x 43" / 210-417 lbs
AVAILABLE POWER SYSTEMS	PowerSwap Nucleus® Classic Lithium, Fixed Lithium or Sealed Lead Acid
TYPICAL POWERED COMPONENTS	PC and monitor, laser printer and scanner
INCLUDED STANDARD	Adjustable-height shelf, locking casters, push handles, wastebasket and holder, integrated power system, power strip and cord reel holder

# THE LINEUP, CONTINUED

In addition to the wide range of capacities we offer in our EC, NB and PC series, we also have more specialized models and a comprehensive suite of accessories. Complete customization engineering services are also available.



## APEX SERIES

Our on-the-fly height-adjustable carts for instant adjustability to suit every user.



SIZE/WEIGHT	30 x 36 x 33-48" / 112-234 lbs (shown) or 26 x 19 x 30-48" / 86-167 lbs
AVAILABLE POWER SYSTEMS	PowerSwap Nucleus® Classic Lithium, Fixed Lithium or Sealed Lead Acid
TYPICAL POWERED COMPONENTS	Laptop, tablet, 1- 2 LCDs, barcode printer & scanner
INCLUDED STANDARD	Adjustable-height shelf, locking casters, integrated push handles, integrated power system and power strip



## QC SERIES

Offers vast storage capabilities for manufacturing and quality testing processes.



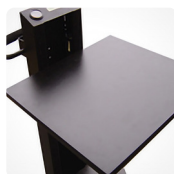
SIZE/WEIGHT	29 x 22 x 42" / 115-195 lbs
AVAILABLE POWER SYSTEMS	PowerSwap Nucleus® Classic Lithium, Fixed Lithium or Sealed Lead Acid
TYPICAL POWERED COMPONENTS	Laptop, LCD, small thermal printer and scanner
INCLUDED STANDARD	Lockable drawer, side pocket, document holder, locking casters, wastebasket and holder, and integrated power system

## Accessories

Accessories shown here are just a sample of what we offer; visit [newcastlesys.com](http://newcastlesys.com) or ask your salesperson for a complete list.



LCD and touch-screen mounts



Shelves



Keyboard trays



Thin client and CPU mounts



Printer trays



Label holder



Scanner holders



Laptop/tablet holder

## Custom engineering services

Our carts are modular and can be easily adapted to fit most needs. But we also offer comprehensive engineering services to create custom solutions—including carts, power systems, custom branding, and for any other special requirements.



# YEAH, BUT.

You've heard our case. (Thank you.) But in case your inner skeptic is getting the best of you, here are three final thoughts:

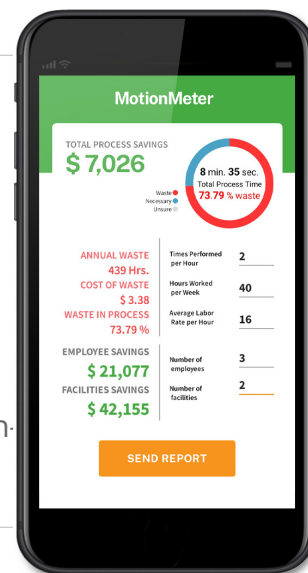
## "Your carts sound too dang good to be true."

Some of our statistics are so good you may doubt them—but we assure you they're all based on real-world testing, or come directly from our customers. [Check out our complete set of reviews.](#) Our Powered Carts really are that good.

## "Our operations are already super-efficient."

Congratulations! But — we haven't yet met a workplace where carts couldn't make a big difference. Even companies that have invested in practices like Lean Manufacturing lose much more to wasted time than they realize. It may be more of a trickle than a geyser, but even a drip, drip, drip adds up fast.

The good news is there's an app for that. Our own MotionMeter will help you find and precisely measure inefficiency, and costs you nothing. Learn more at [newcastlesys.com/motionmeter](http://newcastlesys.com/motionmeter). Available for Apple and Android; download it wherever you get apps.



## "I can't afford it."

To you we say, "Keep your eye on the ROI." While it's true that carts aren't free, they *are* the next best thing: An investment that pays for itself within a few short months and then keeps on giving returns for years. You may never make another purchase with such speedy and predictable Return on Investment. But to really nail down the financial case, try our ROI calculator at [newcastlesys.com/roi](http://newcastlesys.com/roi). You'll know exactly what your return will be.

### Typical ROI calculation

BASED ON \$20 HOURLY LABOR RATE (INCLUDING BENEFITS), 40 HOURS PER WEEK, 12 MINUTES (PER HOUR) OF WASTED FOOTSTEPS

All-in-One Mobile Printing Stations (includes Zebra printer, scanner & Newcastle EC Series cart with PowerSwap lithium)	1 User	50 Users
\$\$ saved per year when walking is eliminated	\$8,320	\$202,450
Hours saved per year	416	20,800
Number of months to pay back initial printer/scanner/cart stations	5.8	

# WELCOME TO THE FAMILY



John O'Kelly  
Newcastle CEO

We started Newcastle with two things: a great idea, and a conviction. Both have held true. The idea was as simple as it was innovative—to create mobile workspaces that would liberate employees to be more productive. And the conviction? Even when you are a “product company,” you’re always a “people company” first.

Since then, we have pioneered an entire industry, and we’re proud of that. But we’re even prouder of the relationships we’ve built—with our customers and with our amazing team—and that we’ve never lost sight of our goal of helping people make their work easier and more productive. That’s still what gets us up in the morning.

So whether you’re a long-time customer, or just considering a trial of one of our products, you have a place in the Newcastle family. To every one of you, from every one of us: We promise to do our very best to help you succeed, every single day.



## NEWCASTLE SYSTEMS: THE RECOGNIZED LEADER IN POWERED CARTS AND PORTABLE POWER SYSTEMS.

Newcastle Systems  
34 South Hunt Rd.  
Amesbury, MA 01913 USA  
(781) 935-3450

[NEWCASTLESYS.COM](http://NEWCASTLESYS.COM)



SAVE STEPS.  
INCREASE PRODUCTIVITY.™