

ASSEMBLY MANUAL



NB Series 380



LEARN MORE AT
NEWCASTLESYS.COM/NBSERIES



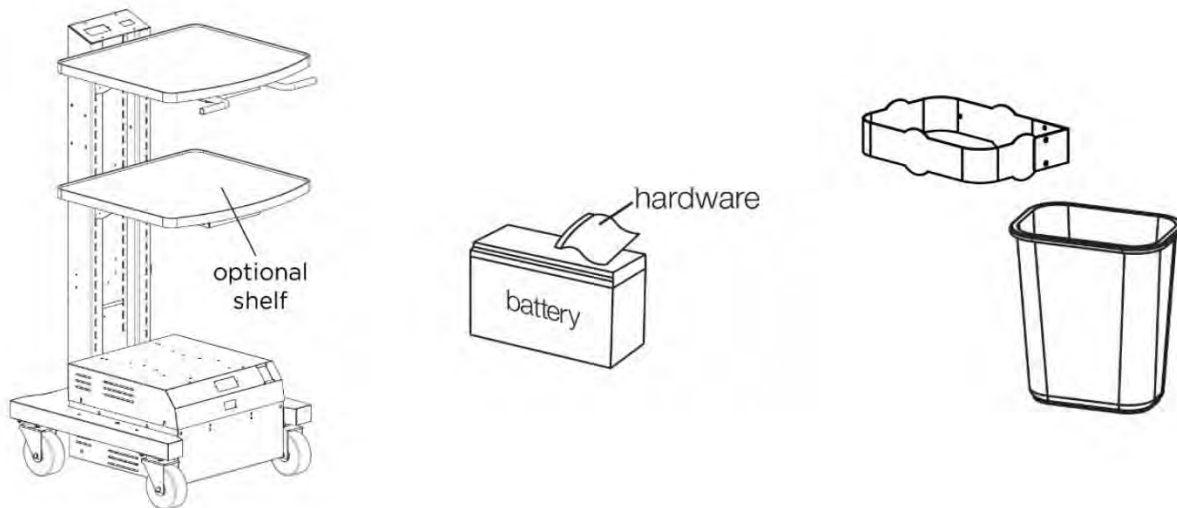
SAVE STEPS.
INCREASE PRODUCTIVITY.™

NB380 Assembly Manual

Standard Contents

Each cart will come with the following standard contents:

- Cart (assembled)
- Battery and hardware
- Trash can holder and green can



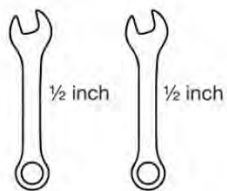
Optional Accessories

Any optional accessories that were ordered with the cart will either be installed on the cart or shipped separately in a box with the cart.

Note: some accessories may be placed in the power cabinet or green trash can for shipping purposes.

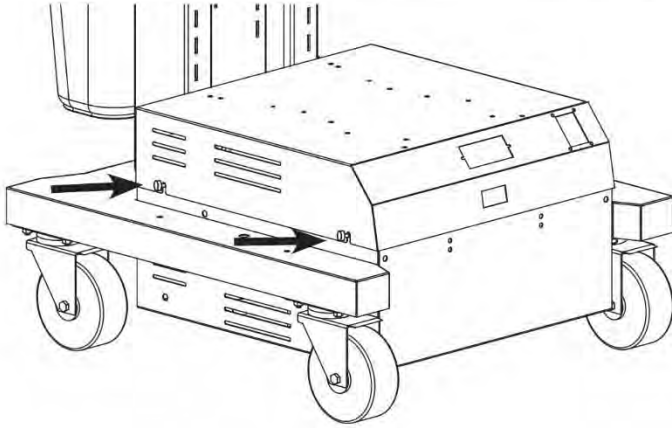
Tools Required

Two 1/2" open end or socket wrenches

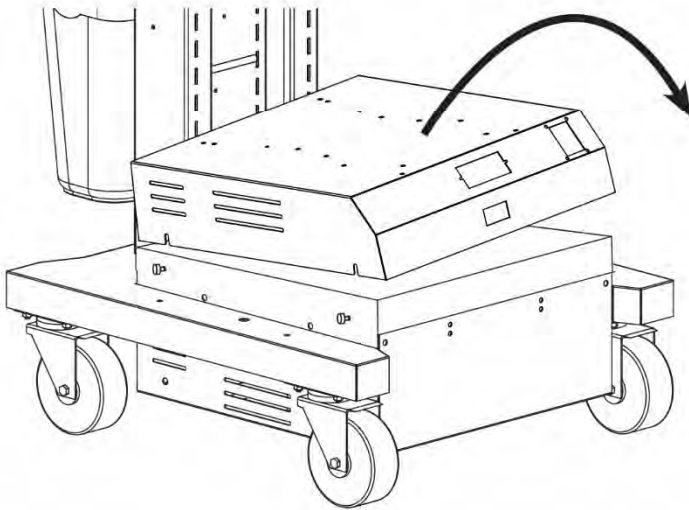


Setting up the NB Series

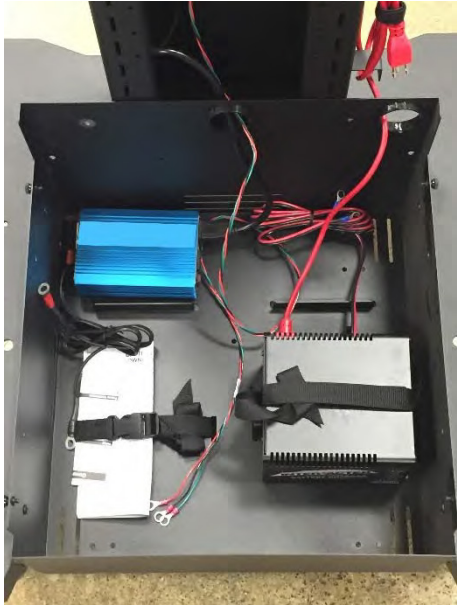
1. Open the power box by loosening the (4) thumbscrews.



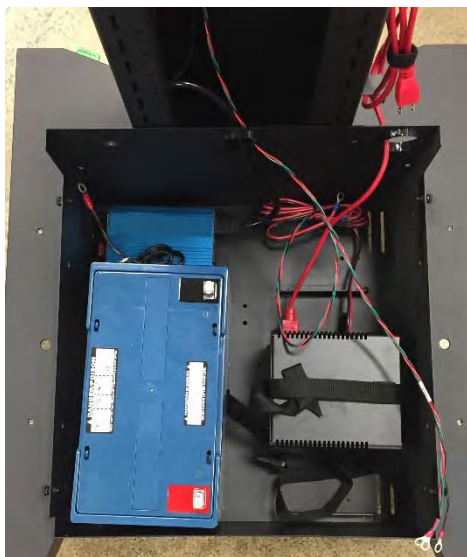
2. Next, remove the power box cover.



NB380 Assembly Manual



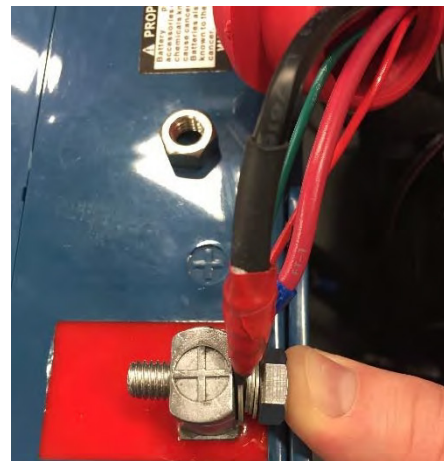
3. Remove battery & hardware (includes (2) bolts, (2) nuts, (4) flat washers and (2) lock washers) from cardboard box



4. Unclip nylon battery straps and place battery in cabinet as shown



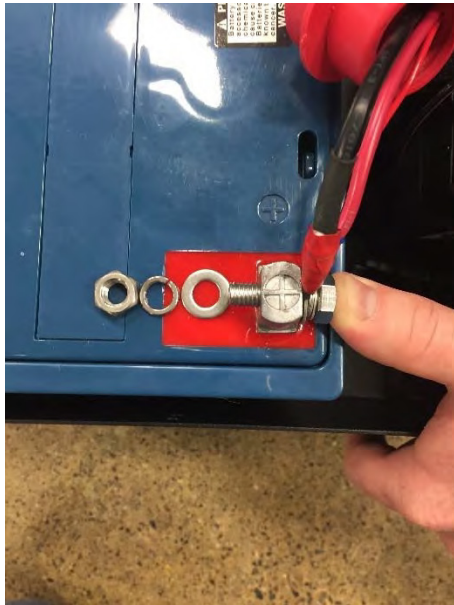
5. For the first battery connection, there are (4) wires (shown above) to be connected to the positive (red) terminal on battery



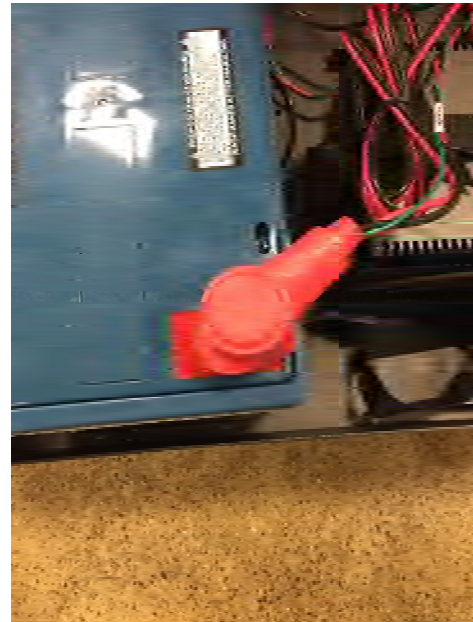
Black/red inverter cable / red/blue charger wire / green meter wire / red meter wire

6. Place wires (in order shown above) onto bolt

NB380 Assembly Manual



7. Retrieve nut, lock washer and flat washer (as shown above)



9. Pull rubber boot over tightened terminal (as shown above)



8. Place flat washer, lock washer, then nut onto bolt and tighten with ½" wrenches



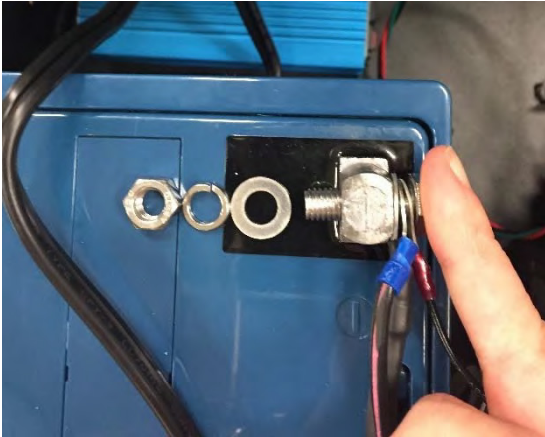
10. For negative battery connection, place the 3 remaining black wires onto bolt as shown

NB380 Assembly Manual

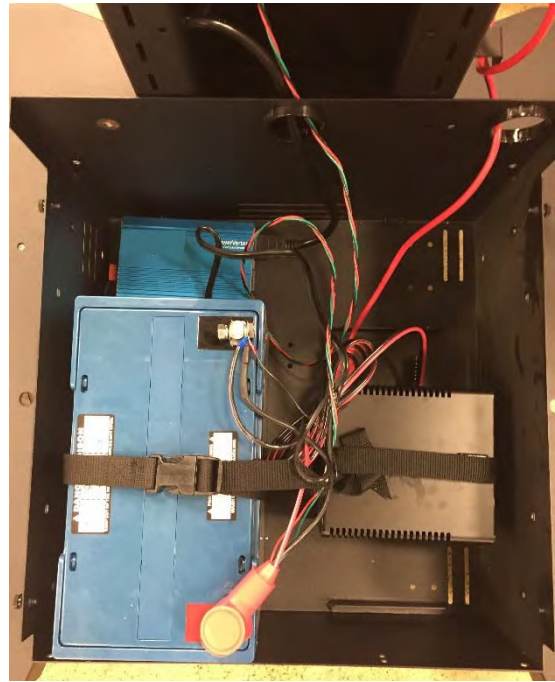
11. Insert bolt through negative (black) battery terminal (as shown below)

NOTE: Sparking is normal for the first connection.

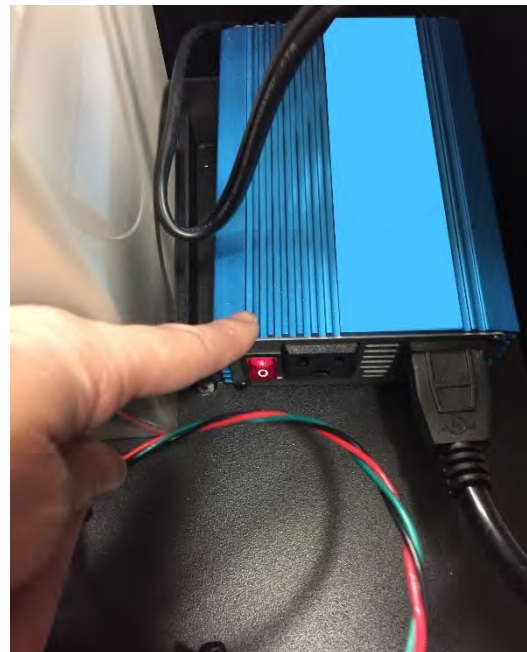
Retrieve nut, lock washer and flat washer (as shown below)



12. Place flat washer, lock washer, then nut onto bolt and tighten with 1/2 wrenches



13. Make sure all fittings are tight and battery is strapped down in the cabinet.

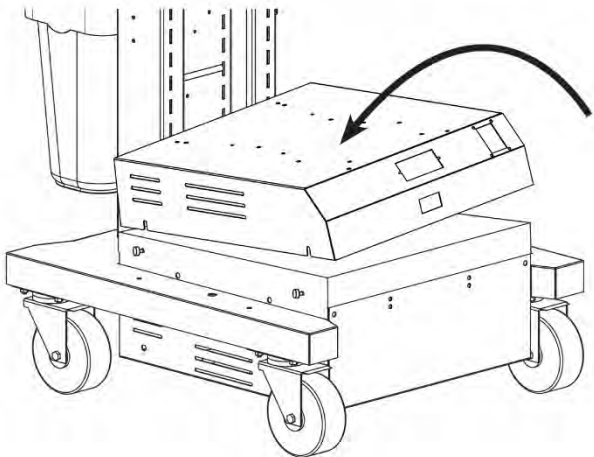


14. Turn inverter on as shown above. Inverter is located behind the battery

NB380 Assembly Manual



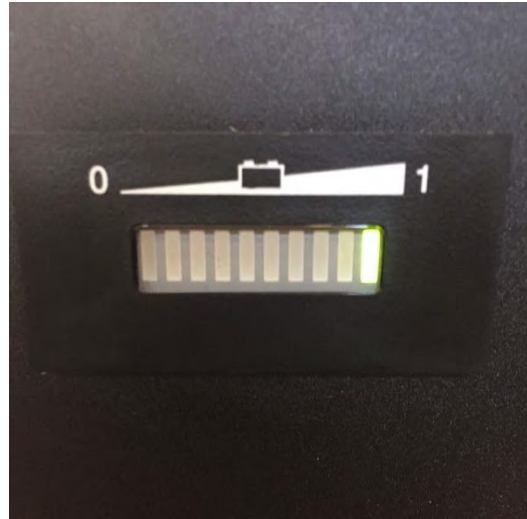
15. Turn powerstrip on. Light should turn red



16. Place power box cover on and tighten the thumb screws

Operating Tips:

1. Charge your battery before using it to ensure it is fully charged. Simply plug the charger cord (located on side of unit) into a standard wall unit.
2. Monitor the battery status meter on the cart (shown below)



LED Battery Meter Light Indicators:

Voltage	11.2	11.4	11.5	11.7	11.8	12.0	12.1	12.3	12.4	12.6
Light#	1	2	3	4	5	6	7	8	9	10
Color	Red Blinks	Red Blinks	Yellow	Yellow	Yellow	Green	Green	Green	Green	Green

3. Batteries should not be discharged below 11.5 volts as this will shorten the life of the battery.
4. If battery is discharged below 11 volts, you may need a separate 10A trickle charger to get the battery above 11 volts. **To avoid this, be sure to charge your unit after every use.**
5. Batteries **SHOULD NOT** be stored in a discharged state. They should be charged as soon as possible after each use (otherwise it will void the warranty). If a battery is left in a discharged state for a period of time it will damage the battery and it may no longer take a charge.

NB380 Assembly Manual



Be sure to charge your cart after every use. Simply turn off the cart's power strip and plug cart into wall outlet.

Accessory assembly manual can be downloaded at:

www.newcastlesys.com/accessory-assembly

6. Do not use the cart when charging the unit. Turn off the power strip, then plug the cart into a wall outlet.

7. Cart's charging system is a trickle charger; leaving it plugged in will NOT damage the battery.

8. Avoid exposing battery to heat, service life is shortened at ambient temperatures above 85F.

For additional questions, please call Technical Support at 781-935-3450.

