



**Polarcart**  
DESIGNED FOR  
COLD CHAIN  
APPLICATIONS  
-4 TO 41° F



## This compact cart slashes wasted motion, pays for itself in no time and thrives in frigid temps

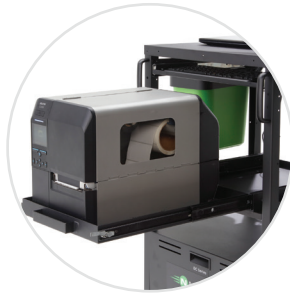
The EC-Polar Series mobile powered cart is designed to provide true mobility for cold chain applications, while eliminating unnecessary movement, touches and transportation. This can result in improved dock to stock cycle times in receiving and on-time shipments in your shipping areas.

This compact unit is ideal for powering a rugged computer, barcode printer and scanner for 8-16 hours in temps down to minus four degrees.

## Outstanding benefits

- › Reduce labor by as much as \$10K per worker
- › Increase receipts by as much as 60%
- › Reduce improperly labeled products
- › Reduce inaccurate inventories
- › Process goods directly at the pallet or on the dock
- › See your ROI in less than six months

# Newcastle EC-Polar Series Powered Industrial Carts



Optional slide-out printer tray



Durable, soft rubber handle grips



Easily integrate a wide variety of accessories

EC-Polar Series with power system designed for frigid temps



<b>Height Adjustable:</b>	Middle shelf adjustable from 20-32" (508-813 mm)	
<b>Shelf:</b>	(1 standard top shelf) 21.75" wide x 20" deep metal (552 x 508 mm) (optional middle shelf) 20" wide x 20" deep metal (508 x 508 mm)	
<b>Capacity:</b>	60 lbs (27 kg) per shelf evenly distributed	
<b>Casters:</b>	5 x 2" (127 x 51 mm) rubber wheels, front fixed, rear locking swivel	
<b>Color &amp; Construction:</b>	Black powder coat & steel	
<b>Model Configurations:</b>	<b>EC1010-P</b>	<b>EC2020-P</b>
<b>Typical Devices Powered (rated for cold temps):</b>	Rugged computer, barcode printer & scanner	
<b>Battery Type:</b>	Sealed Lead Acid	
<b>Run Time (Hrs):</b>	8+	12-16
<b>Continuous Output Power (W):</b>	1000 Pure sine	2000 Pure sine
<b>Surge Power:</b>	2000	4000
<b>Battery Bank (Wh):</b>	1200	2400
<b>Charge Time (Hrs)*:</b>	5	6
<b>Operating Temp (F):</b>	-4 - 41°	
<b>Weight:</b>	160 lbs (72.7 kg)	230 lbs. (104.5 kg)
<b>Dimensions:</b>	20" long x 21.75" wide x 43" high (508 x 552 x 1092 mm)	

\* Unit must be charged in cold temperatures < 41 degrees

LEARN MORE AT  
[NEWCASTLESYS.COM/ECOCART](http://NEWCASTLESYS.COM/ECOCART)



SAVE STEPS.  
INCREASE PRODUCTIVITY.™