

Power Swap System

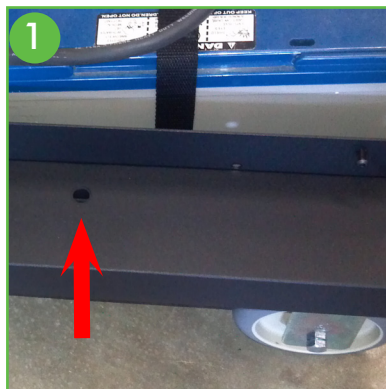
PS01 Conversion Kit Installation Instructions





Installation Instructions for PS01 Conversion Kit

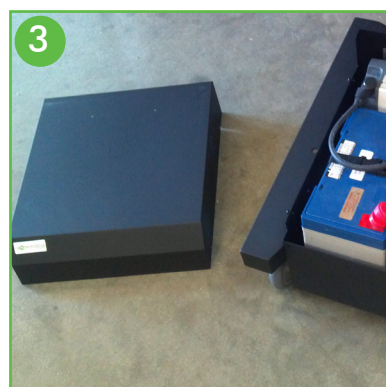
- 1 Before getting started, verify your existing NB Series model can accommodate the Power Swap Series. The easiest way to determine this is to see that there is a pre-drilled hole located on the topside of base, halfway down the side of the battery box.



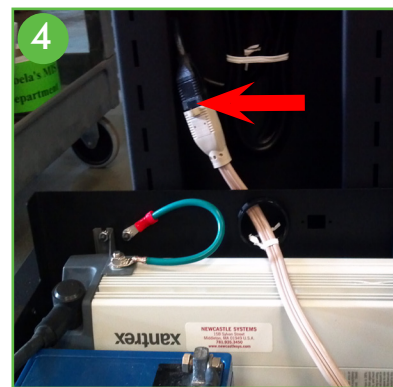
- 2 From the top of the mast, disconnect and remove the remote display panel. Retain mounting bracket and screws.



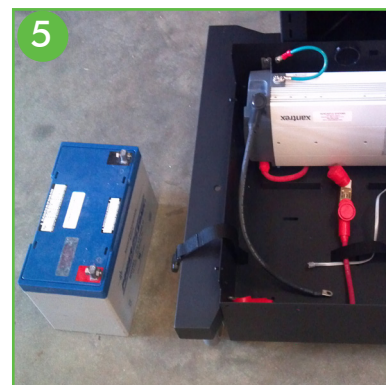
- 3 Remove the power pack cover. This can easily be done by using the allen wrench to remove the (4) screws.



- 4 Disconnect the brown extension cord from the power strip plug. Unwrap the charger cord from the cord reel holder off the mast.



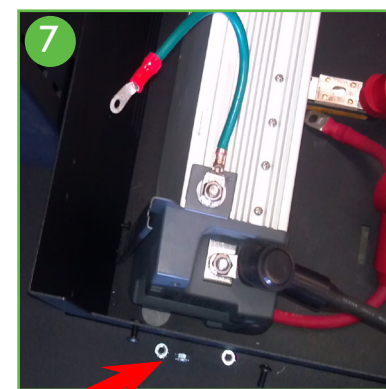
- 5 Disconnect and remove battery (or batteries) from the battery box.



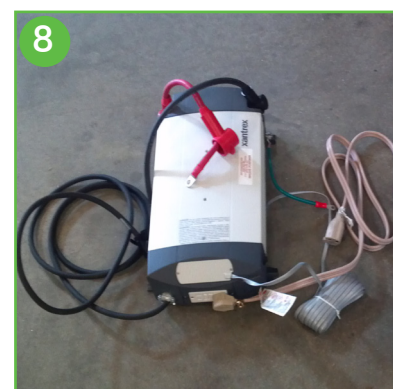
- 6 Disconnect the inverter positive (red) wire from the rear of the fuse block. The cable can stay attached to the inverter.



- 7 Disconnect the (2) retaining screws on the inverter and disconnect the greenish-blue wire as well. Keep hardware.



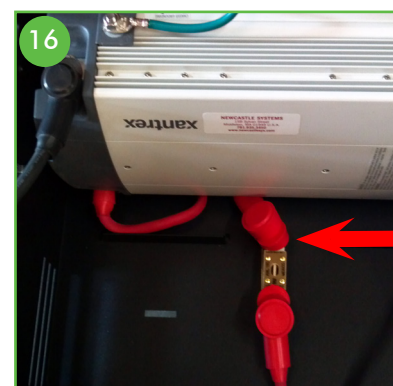
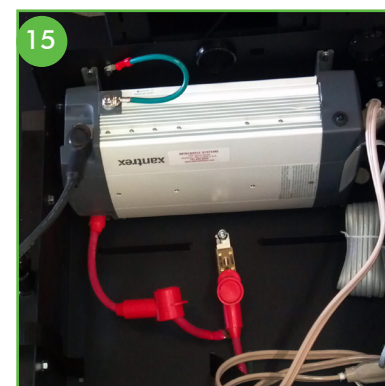
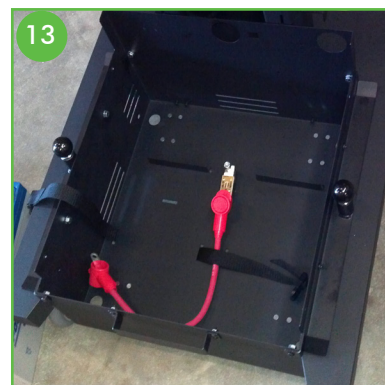
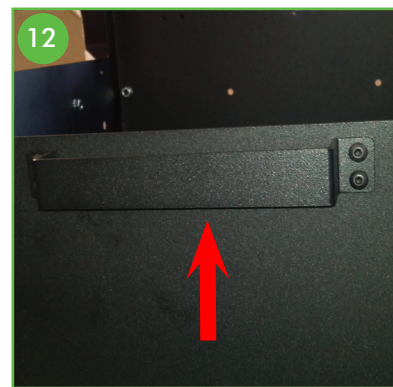
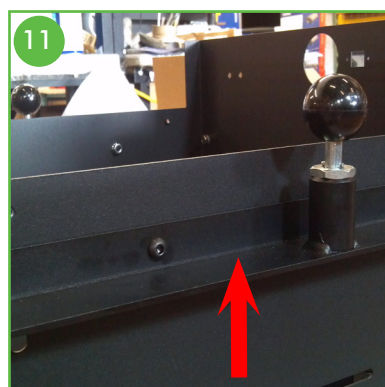
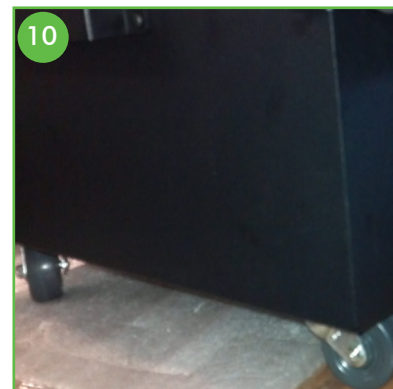
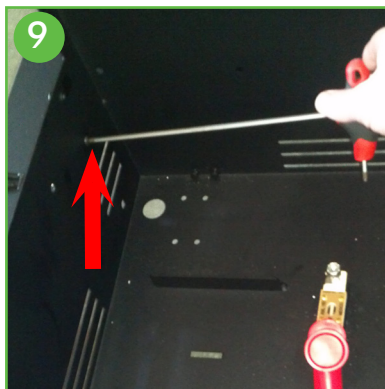
- 8 Remove the inverter and set aside. If necessary, pull the three cables back through the opening in the back of the battery box (black charger cord, grey communications cable and brown connecting power strip cable). The fuse block can remain in the battery box.





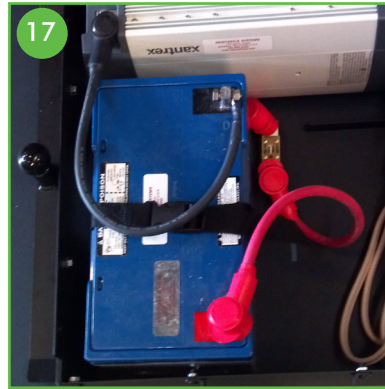
Installation Instructions for PS01 Conversion Kit

- 9 Remove the four screws securing the battery box to the base (from the inside) and remove the battery box. These screws may be discarded.
- 10 Attach the four new mini-casters to the bottom of battery box using the 16 self-clenching steel studs.
- 11 Attach the two Slide Plate Assemblies to either side of the battery box, using the (8) 1/4-20 screws and bolts provided.
- 12 Attach the Pull Handle to the front of the battery box using the (4) 10-32 screws and nuts provided.
- 13 Ensure the battery box slides smoothly in and out of the base assembly before proceeding. Ensure the Locating Pin engages properly into the hole on the base. The Pins are to be turned 90 degrees to engage/disengage.
- 14 Transfer the cord reel holder from the mast to the battery box cover, using the existing hardware.
- 15 Re-install the inverter and secure with (2) nuts and bolts.
- 16 Re-connect the inverter positive (red) wire to the rear of the fuse block.

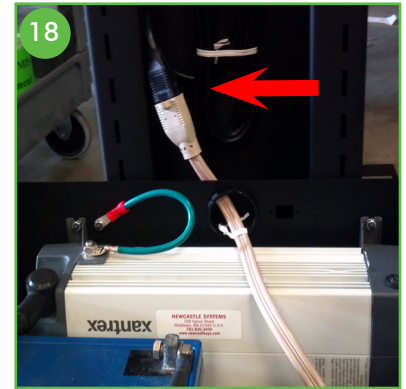




17 Re-install and connect battery (batteries).



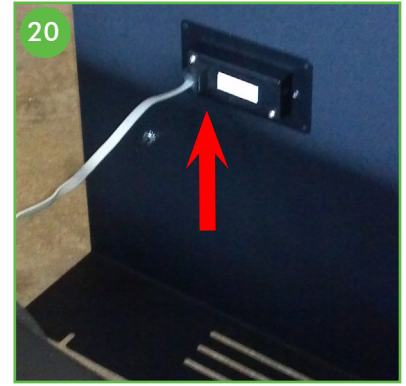
18 Reconnect the brown connecting power strip cable to the power strip.



19 Install the remote display panel in the knock-out on the top of the battery box cover, using the existing mounting bracket and screws.



20 Connect the grey communications cable to the remote display panel.



21 Put the cover back on the battery box and secure. Wrap the charger cord around the cord reel holder on top of the box.



Visit

www.newcastlesys.com/powerswap
to see this system in action

For Technical Support,
call 781-935-3450, ext. 3